

 **breviglieri**
macchine agricole

b123

Power Tiller



USZ1400172/0

Operating and Maintenance Manual



Read these operating instructions carefully before using the machine



Index

SECTION 1 <i>Description and main features</i>	<i>page 3</i>
SECTION 2 <i>General safety rules</i>	<i>page 6</i>
SECTION 3 <i>Transport and handling</i>	<i>page 9</i>
SECTION 4 <i>Instructions for use</i>	<i>page 10</i>
SECTION 5 <i>Maintenance</i>	<i>page 14</i>
SPARE PARTS TABLES	<i>page 17</i>

Data shown on the machine identification plate.

Model:

Serial number:

Year of fabrication:

Date of delivery:

Technical assistance centre authorised by BREVIGLIERI Spa to be contacted for all technical assistance needs.

Dealer:

BREVIGLIERI Spa

37054 NOGARA (Verona) Italy - Phone +39 0442 537404 - Fax +39 0442 537444

www.breviglieri.com - mail: export@breviglieri.com

Summary

SECTION 1	3		
1.1 INTRODUCTION	3	4.1.2 DRIVELINE WITH ADJUSTABLE PLATE CLUTCH	11
1.2 WARRANTY	3	4.1.3 WORK POSITION	11
1.2.1 WARRANTY EXCLUSIONS.....	4	4.2 HITCHING TO THE TRACTOR	11
1.3 DESCRIPTION OF THE MACHINE	4	4.3 TRANSPORT POSITION	11
1.3.1 DESCRIPTION.....	5	4.4 DURING WORK.....	12
1.3.2 USE.....	5	4.3.3 USEFUL TIPS	13
1.4 IDENTIFICATION	5	4.5 TOOLS.....	13
1.5 NOISE LEVEL.....	6	4.6 STOPPING THE MACHINE.....	14
1.6 TECHNICAL SPECIFICATIONS	6	4.6.1 PARKING.....	14
		4.6.2 ELIMINATING OF THE MACHINE	14
SECTION 2	6	SECTION 5	14
2.1 SAFETY NOTES.....	6	5.1 ROUTINE MAINTENANCE	14
2.2 SAFETY DECALS	6	5.2 LUBRICATION	15
2.3 SAFETY AND ACCIDENT PREVENTING RULES	7	5.2.1 RECOMMENDED LUBRICANTS	15
		5.2.2 AFTER THE FIRST 8 HOURS SERVICE	15
SECTION 3	9	5.2.3 EVERY 20 HOURS SERVICE.....	15
3.1 TRANSPORT AND HANDLING	9	5.2.4 EVERY 100 HOURS SERVICE.....	16
		5.2.5 EVERY 500 HOURS SERVICE.....	16
SECTION 4	10	5.3 PREPARING FOR STORAGE	16
4.1 BEFORE USE	10	5.4 SPARE PARTS	16
4.1.1 DRIVELINE	10		

SECTION 1

Description and Main features

1.1 INTRODUCTION

This manual contains all the information and indications considered necessary to know, correctly use and normally service "b123" rotary tiller (also called machine in the text) manufactured by **BREVIGLIERI SpA** of Nogara (VR) Italy, also called Manufacturer in the text. The information and indications do not give a full description of the various components or a detailed illustration of how they operate. However, the user will find everything he normally requires in order to safely use the machine and keep it in a serviceable condition. Failure to comply with the indications given in this manual, negligence during work, incorrect use of the machine and unauthorized modifications to the same may void the warranty supplied by the Manufacturer.

The Manufacturer therefore declines all and every liability for damage due to negligence and failure to comply with the instructions in this manual.

If repairs or overhauls of a complex nature are required, contact an authorized assistance center with specialized personnel or the actual Manufacturer who is at your complete disposal for prompt and accurate technical assistance and anything else that can ensure you get the best and most efficient performance from the machine.

This manual must be kept in a safe place, ready to hand for consultation throughout the entire life of the machine. Reference will solely be made to the Italian version of the instructions in the event of disputes.

Some of the illustrations in the manual may not exactly depict the machine in your possession: they are included for the sole purpose of explaining the operations that must be carried out.

1.2 WARRANTY

The Manufacturer guarantees brand new products for a period of 12 (twelve) months from the date of delivery. When the machine is delivered, make sure that both it and the accessories are complete and in a perfect condition. Complaints should be presented in writing within 8 (eight) days from receipt of the machine. The warranty merely covers the repair or replacement, free of charge, of those parts which, after thorough examination by the Manufacturer, are recognized as being defective (with the exclusion of tines). Expenses concerning replacement of lubricants, transport costs, customs duties and VAT remain at the purchaser's charge in any case. Replacement or repair of parts under guarantee shall in no case extend the warranty terms.

The Manufacturer will not accept returned goods without prior written authorization.

The purchaser shall only be able to exercise his rights in relation to the warranty when he has complied with the conditions governing warranty performance, as indicated in the supply contract.

1.2.1 WARRANTY EXCLUSIONS

(Besides the circumstances indicated in the supply contract) the warranty becomes void:

- When the damage can be ascribed to insufficient maintenance.
- When, following repairs made by the user without the Manufacturer's consent or owing to the installation of spurious spare parts, the machine has been subjected to changes and the damage is ascribable to these changes.
- When the machine has been hitched to tractors whose power rating exceeds the value given in the "Technical Specifications" table in this manual.
- When the user has failed to comply with the instructions in this manual. Damage deriving from negligence, carelessness, bad and improper use of the machine or incorrect manoeuvres by the operator are also excluded from the warranty. Removal of the safety devices with which the machine is equipped shall automatically void the warranty and relieve the Manufacturer from all relative liability. The warranty also becomes void if spurious spare parts are used.

Even when covered by the warranty, the machine must be returned **Carriage Free**.

1.3 DESCRIPTION OF THE MACHINE

The **b123** rotary tiller bears «CE» marking in compliance with the European Union standards described in directive 98/37/EC and successive modifications, as stated in the declaration of conformity with which each machine is equipped.

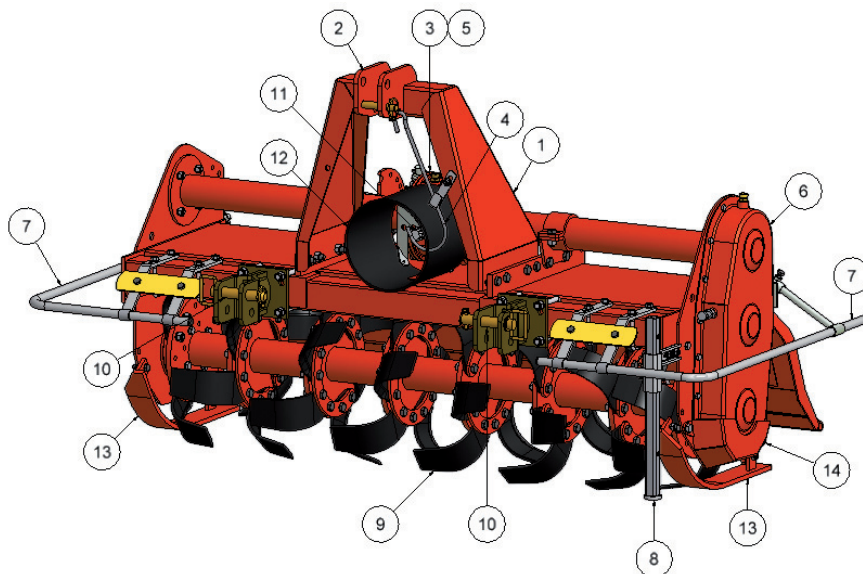




Fig. 1

1. Three-point hitch linkage
2. Upper 3-point hitch
3. Machine lifting point
4. Driveline support
5. Gearbox
6. Side transmission unit
7. Safety guards
8. Bearing stand
9. Bladed rotor
10. Lower 3-point hitch
11. Power take-off
12. Driveline shield
13. Work depth adjuster skid
14. Skid adjuster bolt
15. Identification plate

 breviglieri S.p.A.  macchine agricole VIA A. LABRIOLA, 2 - 37054 NOGARA (Verona) ITALY			
MODELLO MODEL MODELE MODELL	(A)	VERSIONE VERSION TYPE VERSION	(B)
MATRICOLA REGISTRATION N° N° DI SERIE REGISTERNUMMER	(C)	MASSA Kg WEIGHT Kg POIDS Kg GEWICHT Kg	(D)
		RIDUTTORE GEARBOX	V.V. GEAR L.P.460 V.V. GEAR E.P.460

15

DIMENSIONS

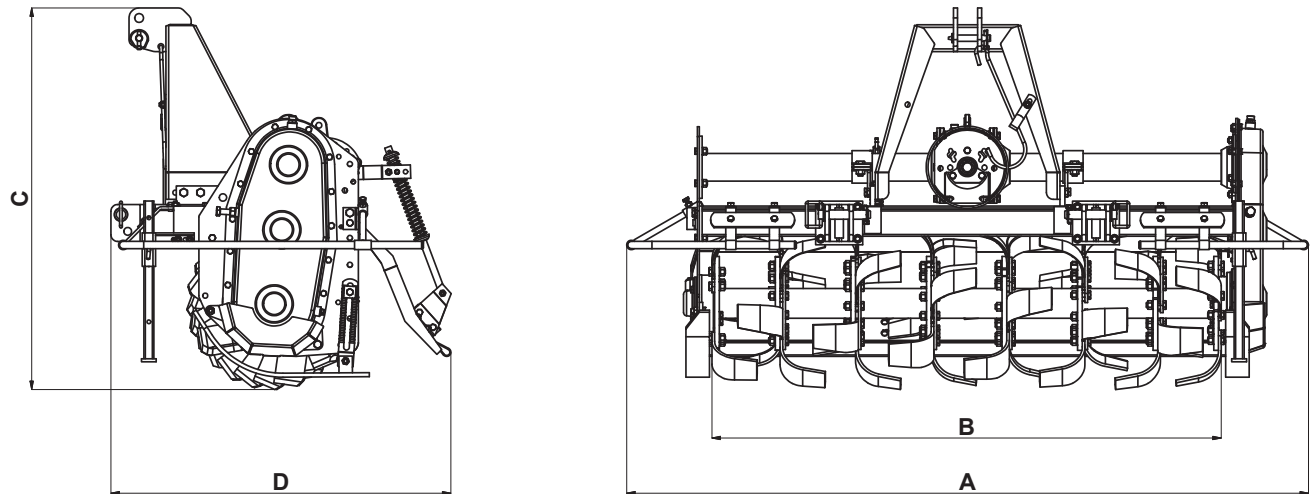


Fig.2

Model	A	B	C	D
b123 - 205	87"	81"	36"	32"
b123 - 230	96"	91"		
b123 - 250	104"	98"		
b123 - 280	116"	110"		
b123 - 300	124"	118"		

1.3.1 DESCRIPTION

The **b123** Rotary Tiller mainly comprises a metal framework with a central linkage and three-point hitches (1 Fig. 1), and a bladed rotor situated in the lower part (9 Fig. 1) driven by a gearbox installed at the side (6 Fig. 1). The power required to operate the machine is transmitted by the tractor via a driveline (with CE marking) which meshes with the gearbox/final drive unit in a central position (5 Fig. 1), and is subsequently transmitted to the gears by a drive shaft.

1.3.2 USE

The **b123** has solely been designed for use in agriculture in order to work and break up the soil. One single operator seated on the tractor is able to carry out the various tillage operations. Any other use of the machine differing from the explanations given in this manual relieves for Manufacturer from all and every liability for deriving damage to persons, animals or property.

1.4 IDENTIFICATION

Each machine is provided with an identification plate (15 Fig. 1) with the following data:

- «CE» marking
- Manufacturer's name and address
- A) Machine model
- B) Machine version
- C) Serial number
- D) Weight (in kg)
- E) Year of manufacture

The data on the identification plate of the machine should be copied into the last page of this manual and must always be stated when spare parts and/or assistance are required.

Standard machine supply includes:

- Driveline
- Operation and maintenance manual for the machine

- «CE» declaration of conformity

1.5 NOISE LEVEL

The noise level (overhead noise) has been measured in compliance with the current laws, with the following results:

- Acoustic pressure LpAm (A) dB 82
- Acoustic power LwA (A) dB 98



CAUTION

The operator is advised to wear adequate ear muffs as personal protective equipment to prevent damage to his hearing during daily work with the machine.

1.6 TECHNICAL SPECIFICATIONS

Mod.	Working width	Weight				Power requirement		N° cutting tools
		Hood	RD Ø477	RG Ø405	RP Ø406	CV	kW	
	in	lbs						
b123 - 205	81"	1653	-	-	-	59 - 69	44 - 52	36
b123 - 230	91"	1764	2138	2205	2425	59 - 89	44 - 66	42
b123 - 250	98"	1874	2249	2315	2535	69 - 99	52 - 74	48
b123 - 280	110"	1984	2359	2425	2646	79 - 108	59 - 81	54
b123 - 300	118"	2094	2469	2535	2756	89 - 120	66 - 88	60

SECTION 2

General safety regulations

2.1 SAFETY NOTES

The user must inform his personnel about the risks deriving from accidents, about the safety devices installed to safeguard the operator and about the general accident-preventing regulations established by the Directives and by the laws in force in the country where the machine is used. It is therefore essential for operators to carefully read this manual, particularly the safety notes, and to pay great attention to operations which could be particularly hazardous.

The Manufacturer declines all and every liability for failure to comply with the safety and prevention regulations given in this manual.



Pay attention to this symbol when it appears in the manual. It indicates a possible danger situation.

There are three danger levels:

- **DANGER:** This is the maximum level danger signal and warns that unless the described operations are carried out correctly, they will cause serious injuries, death or long term health hazards.
- **WARNING:** The «WARNING» signal warns that unless the described operations are carried out correctly, they could cause serious injuries, death or long term health hazards.
- **CAUTION:** This sign warns that unless the described operations are carried out correctly, they could cause damage to the machine and/or persons.

2.2 SAFETY DECALS

The machine has been designed and built in compliance with all possible safety standards able to safeguard those who work with it. Despite this, there may still be residue hazards which are signalled on the machine by decals. These decals (pictograms) are

affixed to the machine and indicate the various situations of insecurity and danger in a brief form.

Keep the decals clean and immediately replace them if they detach or become damaged.

Carefully read the following descriptions and memorize the meanings of the safety decals.



Carefully read the instruction manual before beginning work.



Before proceeding with maintenance operations, stop the machine, lower it to the ground and consult the instruction manual.



Sharp objects could be thrown up by the machine. Keep at a safety distance.



Danger of lower limbs being cut off. Keep at a safety distance from the machine.



Danger of upper limbs being cut off. Do not remove the guards and keep well away from moving parts.



Danger of being caught up by the driveline. It is absolutely forbidden to get near the driveline when it is operating.



Danger of falling. It is absolutely forbidden to climb on to the machine.



Hitching points to lift the machine.



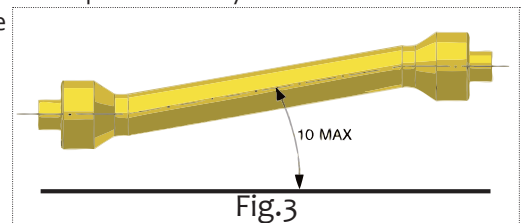
Personal protective equipment to safeguard against noise.

2.3 SAFETY AND ACCIDENT PREVENTING RULES

Carefully read the safety and accident-prevention rules before using the machine. Consult the Manufacturer if in doubt. The Manufacturer declines all and every liability for failure to comply with the safety and prevention regulations described below.

- Do not touch moving parts.
- Adjustments or work on the machine must only be carried out when the tractor engine is off and the tractor blocked.
- It is absolutely forbidden to transport persons or animals on the machine.
- It is absolutely forbidden to operate the tractor or have it operated, with the machine hitched, by persons who are not in possession of an adequate driving license, by inexperienced persons or by those whose psycho-physical conditions of health are not good.
- Comply with all the accident prevention measures recommended and described in this manual.
- When a machine is hitched to a tractor, the weights will be distributed differently on the axles. It is therefore advisable to add ballast at the front of the tractor in order to balance the weight on the axles.
- When hitched to the tractor, the machine can only be operated with the driveline complete with shields fixed by their chains. Keep well away from the spinning driveline.
- Before starting the tractor and machine, make sure that all the safety devices for transportation and use are in perfect conditions.
- Comply with the Highway Code regulations in force in your country when travelling on public roads.
- Do not exceed the maximum tolerated weight on the tractor axles.
- Become familiar with the controls and their functions before beginning work.
- Wear suitable clothing.
- Do not wear loose or flapping garments, scarves, necklaces or ties which could become caught up in moving parts. Wear protective garments such as goggles, gloves and protective footwear if required in the country where the machine is used or when working on particular stony ground.
- The machine must be hitched to a tractor with an adequate power rating.

- Pay the utmost attention when hitching and unhitching the machine to and from the tractor.
- Any accessories used for transportation purposes must be equipped with adequate signs and guards.
- Never ever leave the driver's seat whilst the tractor is operating.
- When driving round bends with and without the machine, take care of the centrifugal force exercised when the center of gravity is in a different position.
- Check the rpm rate before engaging the power take-off. Do not switch the 540 rpm rate with the 1000 rpm one.
- It is absolutely forbidden to linger within the range of action of the machine when this is operating.
- Before you get off the tractor, lower the machine hitched to the power lift unit, stop the tractor engine, engage the parking brake and remove the ignition key from the control panel.
- It is absolutely forbidden to get between the tractor and machine while the engine is running and the driveline engaged.
- Move the power lift control lever to the locked position before you hitch or unhitch the machine to or from the three-point linkage.
- The class of the machine's coupling pins must correspond to that of the power lift hitch.
- Take great care when you work near the lift links. This is a very dangerous area.
- It is absolutely forbidden to get between the tractor and the machine hitch in order to manoeuvre the lifting command from the outside.
- Fix the side lifting links with the relative chains and idlers during the transport phase.
- Set the control lever of the tractor's hydraulic lifting control in the locked position when driving on the roads with the machine raised.
- Only use the driveline recommended by the Manufacturer, with «CE» marking.
- Periodically check the driveline shield. It must always be in an optimum condition and securely fixed.
- Pay the utmost attention to the driveline guard, both during transport and work.
- The driveline must always be assembled and disassembled when the tractor engine is off.
- Make sure that the driveline is assembled on the tractor and machine PTO in the correct way.
- Prevent the shields from turning by means of the relative chains and always read the operation and maintenance manual supplied with the driveline.
- Make sure that there are no bystanders or animals in the vicinity before you engage the PTO.
- Do not engage the PTO when the engine is off.
- Disengage the PTO when the driveline is at an excessively wide angle (never more than 10 degrees, Fig. 3) and when it is not used.
- Only clean and grease the driveline when the PTO is disengaged, the engine off, the parking brake engaged and the ignition key removed from the tractor's ignition switch.
- Rest the driveline on its stand (4 Fig. 1) when not used.
- Prolonged use of the machine can cause the overdrive housing (5 Fig. 1) and certain parts of the hydraulic circuit to overheat. Do not touch these parts during and immediately after using the machine since they could cause burns.
- Do not carry out servicing or cleaning operations unless the PTO has been disengaged and the tractor engine turned off.
- Periodically check to make sure that the nuts and bolts are well torqued. Tighten them if necessary.
- Place adequate supports under the machine as a precaution when servicing or replacing the tines/blades with the machine raised.
- Before working on the cutting tools, detach the PTO, turn off the tractor engine, engage the parking brake and make sure that the tines are at a standstill.
- Use the recommended oils.
- Spare parts must comply with the requirements established by the Manufacturer. Only use genuine spare parts.
- The safety decals must always be clearly visible. They must be kept clean and replaced if they become illegible (new ones can be obtained from the Manufacturer).
- The instruction manual must be kept throughout the life of the machine.
- If the country in which the machine is used has noise prevention laws, adapt to these provisions by using the appropriate protections. The measured noise levels are given in section «1.5 Noise level».
- Comply with the laws in force in the country where the machine is used when it comes to using and disposing of the products used to clean and service the machine. Also comply with the instructions given by the manufacturer of such products.
- Comply with the anti-pollution laws in force in the country of use if the machine must be scrapped.



SECTION 3

Transport and handling

3.1 TRANSPORT AND HANDLING



CAUTION

If the machine, hitched to the tractor, must circulate on the public roads, comply with the Highway Code regulations in force in the country in which the machine itself is used.

The machine must be raised at least 40 cm from the ground for road transport.

If the machine must be transported over a long distance, it can be loaded on a truck or railway car. In this case, consult «1.6 Technical specifications» for the weight and dimensions. This will allow you to make sure that the machine can pass through tunnels or low constructions without difficulty. To lift the machine from the ground to the loading platform, use a crane with an adequate carrying capacity and hook up the machine from the relative lifting points indicated on the machine.

Loading with a crane: make sure that the carrying capacity of the crane is fit to lift the weight of the machine. The connecting points for lifting are clearly visible and are marked by stickers. Lift the machine with the utmost care and move it slowly without jolting on to the truck or railway car.



DANGER

The lifting and transporting operations can be very dangerous unless they are carried out with the greatest care: have all persons not directly involved in the lifting operations move well clear of the lifting area. Clear and delimit the zone to which the machine is to be transferred. Make sure that the available lifting means are fit for the purpose. Do not touch hanging loads and always keep at a safety distance from them. When transported, the loads must not be lifted more than 20 centimeters from the ground. Also make sure that the zone in which the operations take place is uncluttered and that there is a sufficient «escape route», i.e. a clear and safe zone to which the operators can quickly move if the load should fall.



CAUTION

The surface on to which the machine is to be loaded must be perfectly horizontal, to prevent the load from shifting.

Once the machine has been moved on to the truck or wagon, make sure that it remains blocked in position.

- Fix the machine firmly to the surface on which it rests by means of the pre-engineered points marked with the «hook» decal, using well tightened ropes or chains suited to its weight and able to prevent it from moving in any way.
- After having transported the machine to the desired site and before removing the elements that hold it in place, make sure that its position is unable to be of danger.
- Now remove the ropes and unload the machine from the means of transport in the same way as it was loaded.

SECTION 4

Instructions for use

4.1 BEFORE USE



WARNING

Before he sets the machine at work, the operator must have read and understood all parts of this manual and particularly «Section 2» about safety.

Before beginning work, make sure that the machine is in order, that the lubricating oils are at the right level and that all parts subject to wear and deterioration are fully efficient. Also make sure that the guards are correctly positioned.



DANGER

Adjustments and operations required to prepare the machine for work must always be carried out with the machine off and blocked.

4.1.1 DRIVELINE



DANGER

The driveline is a mechanical component. When it is operating it can be a source of danger to the physical well-being of those who work with it. Take the greatest care when carrying out operations that involve the driveline. Carefully read the instruction manual supplied with the driveline. If you have doubts about the way it operates, if it is without its shields, worn or broken, replace it with a new driveline that possesses the same characteristics and bears the «CE» mark.



DANGER

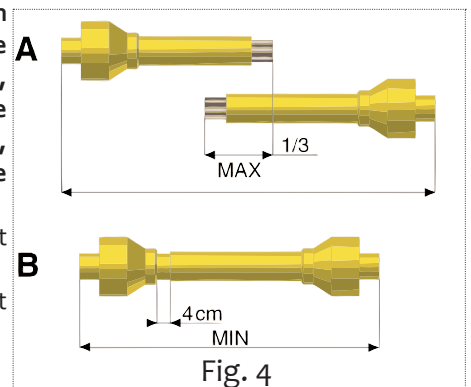
Never modify or adapt the driveline in any way.

If the length must be adapted, work with the utmost care so as to keep the telescopic tubes coupled to the maximum extent. With the exception of length adaptation, it is forbidden to modify the driveline. If this is necessary, contact the Manufacturer.

Take the greatest care when inserting the driveline. Make sure that it is well locked on both the tractor's PTO and on the machine. Also comply with the indications in the instruction manual supplied with each driveline. Make sure that the driveline shield, fastened with the relative chains, is free to turn without obstruction. Also check the guards on both the tractor and implement. If they are not in a perfect condition, they must be immediately replaced with new protections. It is very important for the protective guards to overlap the driveline shields by at least 5 cm on both sides.

When the driveline is fully extended, in all work conditions, the telescopic tubes must overlap to at least 1/3rd of their length (A Fig. 4).

When the driveline is fully inserted, the play must be at least 4 cm (B Fig. 4). Contact the Manufacturer's Technical Service if this is not possible.



CAUTION

Before engaging the PTO, make sure that its rotation speed corresponds to the rate for which the machine has been designed.

4.1.2 DRIVELINE WITH ADJUSTABLE PLATE CLUTCH

The driveline has a safety clutch to protect the transmission components of the machine against stress and excessive overloads. The clutch is calibrated for medium-duty use. If it slips during work, all the nuts that hold the springs must be evenly tightened by half a turn and the operation of the device checked after about 200 meters of work. Repeat the operation if necessary. The clutch must be adjusted by unscrewing the nuts if it is blocked.



CAUTION

If the clutch still slips even when all the nuts have been tightened, the friction plates must be changed as they could be worn or because the springs have become slack. Never fully tighten the nuts as this eliminates the function of the springs and clutch itself, to the detriment of the transmission components.

4.1.3 WORK POSITION



DANGER

The operator must be seated in the driving seat of the tractor when the machine is working since only from that position is he able to act correctly. Before he leaves the driving seat, the operator must stop the machine, apply the parking brake and turn off the tractor engine.

4.2 HITCHING TO THE TRACTOR



DANGER

Hitching to the tractor could be a dangerous operation. Take great care and strictly comply with the instructions.

Proceed in the following way to hitch the machine to the tractor in the correct way:

- Make sure that you are using a tractor whose configuration suits the machine in question.
- Make sure that there are no objects, bystanders and/or animals in the immediate vicinity of the machine and that the PTO is disengaged.
- Make sure that the machine is in a stable, horizontal position, then back up the tractor towards the machine.
- Drive the tractor near to the implement with caution and adapt the height of the lift links to the height of the hitching pins.
- Move the power lift bars near and fit them on to the hitching pins. Now lock in place with the supplied split pins.
- Switch off the tractor engine.
- Connect the top link and adjust it so that the machine is on the flat.
- Lock the power lift bars with the relative chains and parallel idlers on the tractor. This must be done to prevent the machine from swinging sideways.
- Fit the driveline into the machine's power take-off and make sure that it is perfectly locked in the correct position.
- Make sure that the shield is free to turn. Fasten the shield with the relative chain. Remove the support from the driveline (4 Fig. 1) and fix it on the relative hook.
- Switch on the tractor engine, slightly lift the machine from the ground and raise the bearing stands.

4.3 TRANSPORT POSITION

The following expressions must be observed to ensure that the tractor-machine assembly is stable (Fig.5):

$$M \times s \leq 0,2T \times i + Z(d+i)$$

$M \leq 0,3T$ (prudential value)

$Z \geq \{(M \times s) - (0,2T \times i)\} / (d \times i)$ (for calculating the ballast)

where:

i = tractor's wheelbase

d = horizontal distance between the center of gravity of the front ballast and the tractor's front axle

s = horizontal distance between the center of gravity of the machine and the tractor's rear axle

T = weight of the tractor in running order

Z = ballast weight

M = weight of the machine

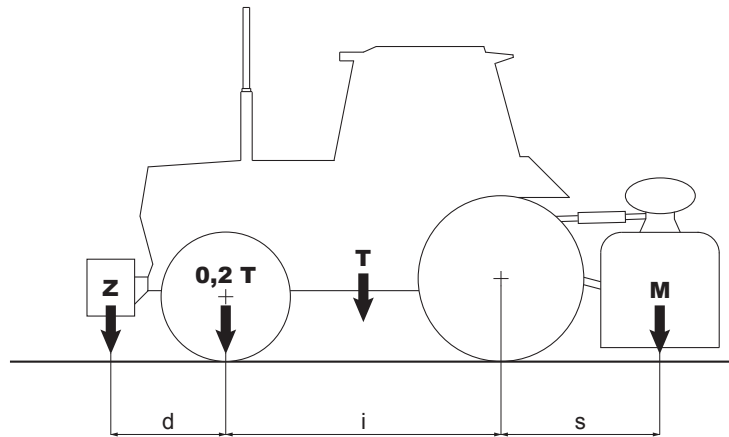


Fig. 5

4.4 DURING WORK

Proceed in the following way after you have correctly hitched the machine, sat down in the driver's seat of the tractor and started the tractor engine:

- Raise the machine about 10 cm from the ground so that the rotor does not touch the vegetation that needs to be cut
- Run the engine at a low rate and engage the PTO
- Gradually accelerate until the PTO is operating at full rate
- Engage the forward gear and start work with the PTO at full rate
- Gradually lower the machine until it rests on the ground. This allows it to adapt to the contours of the soil.



CAUTION

Do not depress the accelerator pedal in an imprudent way with the PTO engaged.

To break up the soil to the required degree, you must consider several factors, ex:

- The nature of the soil (medium consistency, sandy, clayey etc.)
- The working depth
- The ground speed of the tractor
- Optimum machine adjustment

For a better soil levelling and crumbling, the rotary tiller is equipped with a rear hood, with adjustable opening by means of a locking chain and on request by means of a spring rod.



WARNING

Adjust the hook by keeping it as opened as possible to obtain a better levelling thus avoiding dangerous throwing of the clods and stones as well as the hood itself



CAUTION

An excessive depth adjustment, in particular by means of the spring rod, means high efforts and early wear and tear.

A better soil crumbling can be obtained with a low tractor ground speed, the rear bar lowered and the blade-holder rotor spinning at

200 rpm. Besides holding back the clods already broken up by the blades, the rear bar also gives a well-levelled and uniform surface after the soil has been worked. When the rear bar is raised, the clods are no longer broken up and the soil is no longer levelled.

4.3.3 USEFUL TIPS

Here are a few useful suggestions on how to resolve some of the problems that may occur during work.

Cut plants shredded to much

- Slightly lift the cutter from the ground, adjusting the height with the wheels (the blades of the cutter must not touch the ground).
- Increase the ground speed.

Cut plants not shredded enough

- Slightly lower the machine towards the ground.
- Reduce the ground speed.
- Do not work in soil that is too wet.

Rotor clogged

- Soil too wet to work.
- Raise the machine from the ground.
- Reduce the ground speed.
- Do not work where the grass is too tall. If necessary, remove any material that has built up at the sides of the rotor to prevent overheating.

The machine jolts over the ground or vibrates

- Foreign bodies locked between the knives.
- Knives incorrectly mounted without the helical arrangement or with edges that dig into the ground.
- Worn or broken knives.
- Rotor misshapen owing to blows received during work from foreign bodies in the central part.

Other faults

- The machine fails to work evenly along its width, shredding either too much or too little on one side, for example on the right: shorten the right link.

Work on hilly ground

It is advisable to proceed «upwards» in the direction of the slope. Particular attention should be paid since, owing to the nature of the ground, the stability of the tractor could be compromised or it could slip sideways.

Winter periods

It is inadvisable to work with the machine during cold periods, when the temperature drops below 0°C (zero degrees centigrade), because the tines become sensibly more fragile. Moreover, when the weather is cold, the machine must be allowed to idle for a few minutes with the PTO at half rate so as to allow the lubricants and transmission components to warm up.

4.5 TOOLS

The knives with which the machine is equipped are suitable for work with soil/plants of normal conformation. Check their condition each day to make sure they are not worn. If they should accidentally bend (or break) during work, they must be immediately replaced and mounted in the identical position.



DANGER

Tool replacement is a dangerous operation.

Proceed in the following way to replace the tools:

- Park the tractor on a flat surface with the machine hitched, then raise the machine with the power lift
- Insert two strong bearing stands at the sides of the machine to protect yourself should it fall
- Lower the machine on to the stands, turn off the tractor engine and apply the parking brake

4.6 STOPPING THE MACHINE

At the end of the job, the operator must:

- Disengage the tractor PTO
- Lower the machine to the ground
- Stop the tractor and engage the parking brake
- Make sure that all parts of the machine have come to a standstill

Only after the above mentioned operations have been carried out may the operator leave the tractor unattended.

4.6.1 PARKING

To park the machine and unhitch it from the tractor, the operator must:

- Make sure that no one is standing or crossing the place where the machine will be parked
- Make sure that the place in which the machine is to be parked is suitable, flat and uncluttered
- Drive to the area where the machine is to be unhitched
- Brake the tractor
- Lower the bearing stands
- Completely lower the machine to the ground
- Stop the tractor and engage the parking brake
- Disconnect the quick couplings
- Remove the driveline from the tractor's PTO and rest it on its bracket
- Disconnect the top link rod
- Disconnect the power lift links
- Switch on the tractor engine and move away



WARNING

The place in which the machine is parked must be:

- Dry
- Sheltered from adverse weather conditions
- Guarded or locked up to prevent the machine from being accessed by animals, children or persons who are not trained to use it



CAUTION

If the machine is to remain idle for a long period of time, lubricate the parts subject to wear and store it in a dry, sheltered place, covered with a plastic sheet. This will ensure that the machine is in an ideal condition when required again.

4.6.2 ELIMINATING OF THE MACHINE

At the end of the operating life of the machine (or when it becomes obsolete), before carrying it in an authorized center, to make sure that there is no oil in the multiplying or in the hydraulic system (in case present), to the aim to avoid highly polluting dispersions for the atmosphere. It is necessary to inquire itself near the competent local authorities by the procedure to follow, always in the respect of the national laws.

SECTION 5

Maintenance

5.1 ROUTINE MAINTENANCE

The various routine maintenance operations are described below. Remember that lower running costs and long machine life depend on continual compliance with these instructions.

**WARNING**

Before proceeding with any operation, make sure that the machine is parked on a flat surface. Prevent it from moving by placing chocks under the wheels.

Servicing, adjusting and the operations required to prepare the machine for work must be carried out with the tractor and the driveline detached from the machine.

The servicing frequencies indicated in this manual are indicative and refer to normal conditions of use. They may therefore vary depending on the type of service, whether the environment is dirty or not, seasonal factors, etc.

The servicing operations must obviously be carried out more frequently in heavier duty service conditions.

**CAUTION**

Before injecting lubricating grease into the grease nipples, carefully clean the unions to prevent mud, dust or foreign bodies from mixing with the grease as this would reduce or even annul its lubricating effects.

Injection into the greasing points of a large quantity of grease at high pressure can damage the bearing protection.

This operation must therefore be carried out with due care.

Lubricate and grease all the required points.

Use oil of the recommended type for topping up and changes.

**DANGER**

Keep all lubricants well away from children's reach.

Carefully read the warnings and precautions on the lubricant containers.

The operator should thoroughly wash himself after using lubricants.

Dispose of used oil in compliance with the anti-pollution laws.

5.2 LUBRICATION

Lubrication of any machine with parts that turn and/or rub together is a vitally important task for the life and functionality of the actual machine itself. Lubrication must therefore be carried out systematically and at the required intervals. The frequencies given refer to machine use in a normal environment. If this machine is used in heavier duty conditions, it must naturally be lubricated more frequently.

5.2.1 RECOMMENDED LUBRICANTS

- It is advisable to lubricate the overdrive with: SAE 85W/140 OIL, complying with API-GL5/MIL-L-2105C specifications.
- For all greasing points, the Manufacturer recommends: LITHIUM GREASE.

When servicing the driveline, strictly comply with the instructions given by the driveline Manufacturer, in the specific operation and maintenance manual with which each driveline is equipped.

5.2.2 AFTER THE FIRST 8 HOURS SERVICE

Each new machine must be checked after the first 8 hours service. Proceed in the following way:

- Check the general condition of the machine
- Make sure that all the screws are well tightened
- Check the cutting tools for wear and make sure that the bolts that fasten them are well tightened
- Check the level of the lubricants

5.2.3 EVERY 20 HOURS SERVICE

- Make sure that the screws that fix the cutting tools are well tightened
- Grease the driveline

5.2.4 EVERY 100 HOURS SERVICE

Check the level of the oil in the overdrive housing. If necessary, top it up through the plug on the top of the gearbox.

5.2.5 EVERY 500 HOURS SERVICE

Change the oil in the overdrive housing after every 500 hours service or at least once a year.

5.3 PREPARING FOR STORAGE

Proceed with the following operations at the end of the season or if the machine is to remain idle for a long period of time:

- Wash all fertilizers and chemical products from the machine and dry it
- Carefully check the machine and replace any damaged or worn parts
- Fully tighten all the screws and bolts, particularly the ones that fix the tines
- Thoroughly grease the machine and then cover it with a tarpaulin and store it in a dry place. If these operations are carried out with care, it will be all to the user's advantage as the machine will be in optimum conditions when needed again.

If these operations are carried out with care, it will be all to the user's advantage as the machine will be in optimum conditions when needed again. If the machine must be dismantled, comply with the anti-pollution laws in force. Old lubricants must and the various components must be disposed of according to their different structures.

5.4 SPARE PARTS

All the parts forming the machine can be ordered from the Manufacturer, specifying:

- Machine model
- The serial number of the machine
- The year of manufacture
- The serial number of the required part (indicated in the spare parts catalogue), a description of the part and the required quantity
- The means of transport

Transport way: if this is not specified, the Manufacturer will dedicate particular care to the service but shall not be liable for delays in shipment due to unforeseen circumstances. The shipping costs are always at the consignee's charge. The goods travel at the purchaser's risk and peril even when sold carriage paid.

Remember that the Manufacturer is always at your disposal for any assistance and/or spare parts you may required.

• S P A R E P A R T S T A B L E S •

Table 1	Frame	18
Table 2	Three-point hitch	20
Table 3	Gear box	22
Table 4	Geared side transmission	24
Table 5	Rotor	26
Table 6	Spring hood adjustment	28
Table 7	Roller adjustment	30
Table 8	Sprocket roller	32
Table 9	Cage roller	34
Table 10	Packer roller	36
Table 11	CE Protections	38

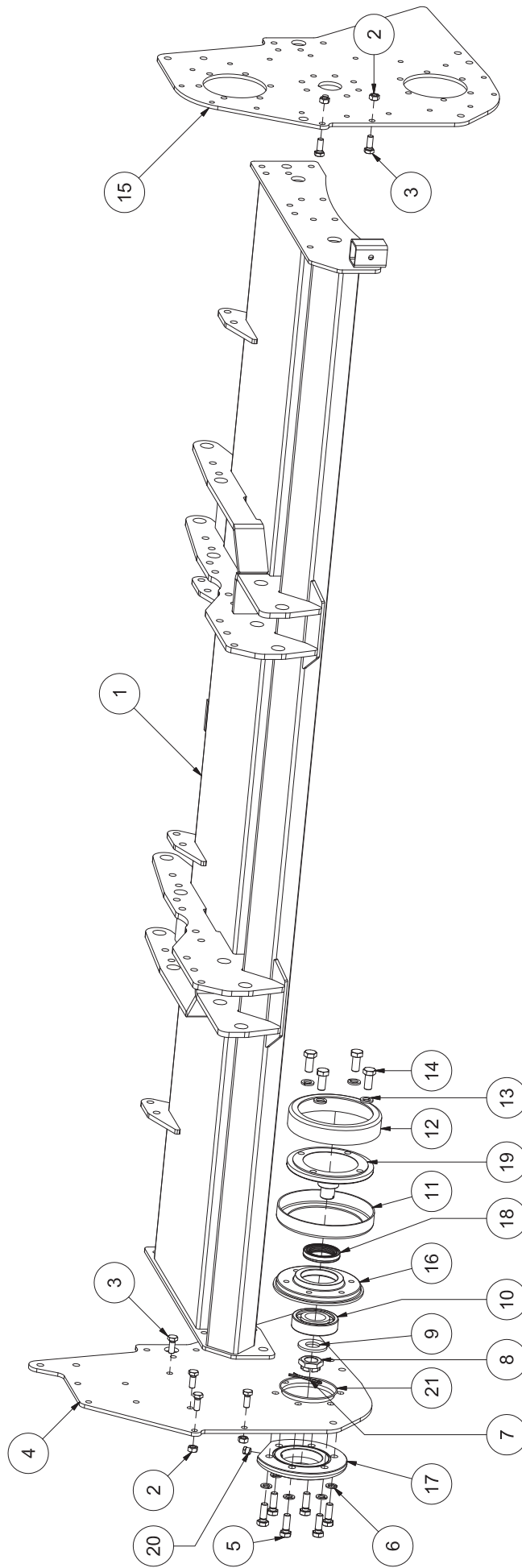


Table 1

Table 1

POS.	CODE	DESCRIPTION	QTY
1		FRAME	1
		VERS.205	
		VERS.230	
		VERS.250	
		VERS.280	
		VERS.300	
2	0030064	NUT M12	20
3	0015255	BOLT M12x30	20
4	Z1400006	SIDE PANEL RH	1
5	0002437	BOLT M14x40	6
6	0001104	SPRING WASHER Ø14	6
7	0018461	PIN Ø5x50	2
8	0003055	NUT M30	1
9	0066039	FLAT WASHER Ø31	1
10	0001085	BEARING 6309	1
11	0018035	OUTER COVER	1
12	0018036	INNER COVER	2
13	0002188	SPRING WASHER Ø16	12
14	0019048	BOLT M16x35	12
15		TRANSMISSION SIDE PANEL LH	1
	Z1400005	GEARS	
	-	CHAIN	
16	Z1400134	ROTOR SUPPORT RH	1
17	Z1400135	OUTER COVER RH	1
18	8064386	OIL SEAL 56-80-14.5 RWDR	1
19	Z1400133	RH PIN ROTOR	1
20	0094188	OIL PLUG M14x1,5	1
21	8066343	O-RING 3475 120.32x2.62	1

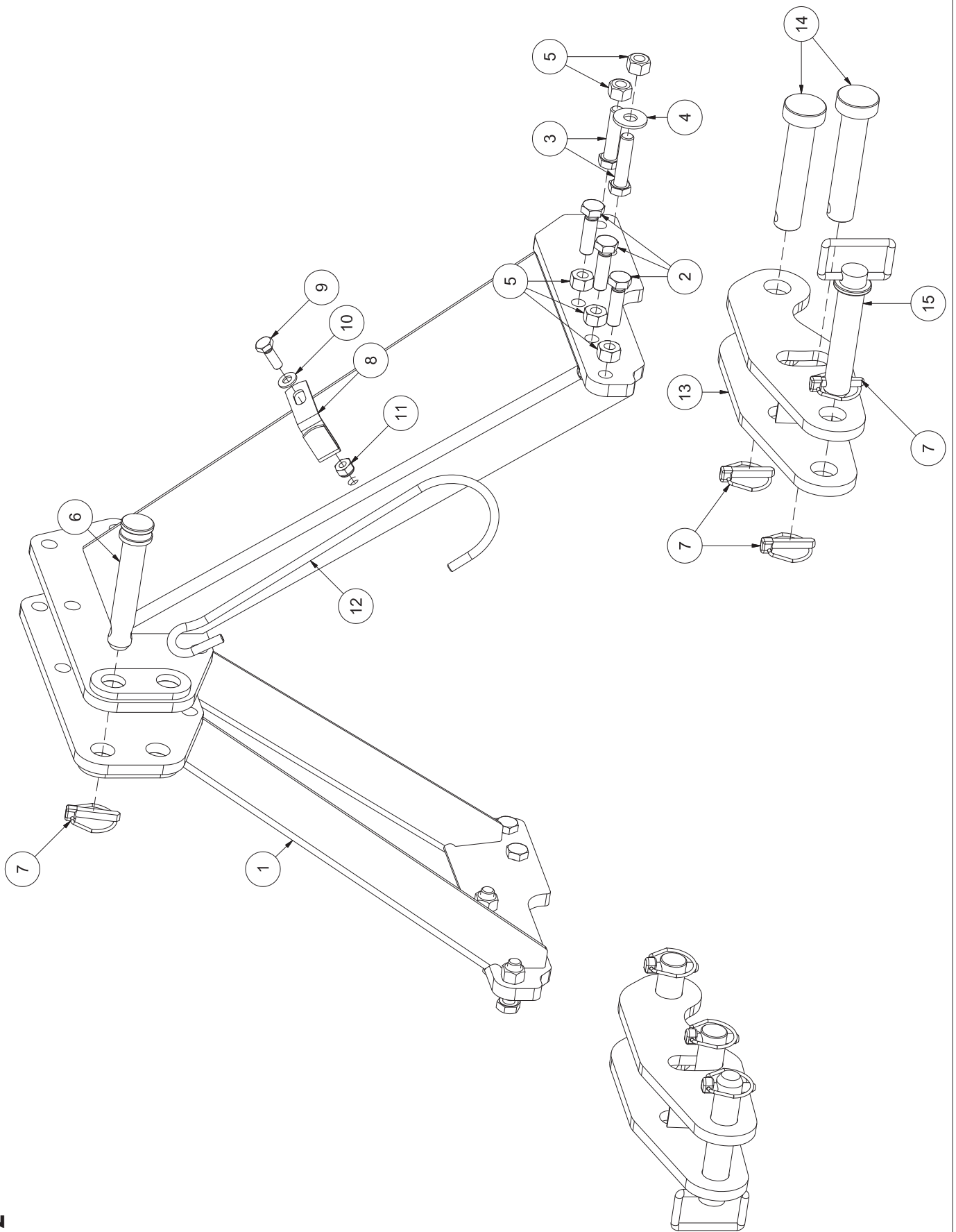


Table 2

Table 2

POS.	CODE	DESCRIPTION	QTY
1	Z1400007	3 POINT HITCH	1
2	0029317	BOLT M14x50	6
3	0021300	BOLT M14x60	4
4	0056807	FLAT WASHER Ø14	2
5	0030358	NUT M14	10
6	A0700040	PIN	1
7	0018266	SPRING PIN Ø11x45	5
8	Z0100206	HOOK HITCH	1
9	0001278	BOLT M10x30	1
10	0002034	FLAT WASHER Ø10	1
11	0014106	NUT M10	1
12	0060085	PTO SHAFT SUPPORT HOOK	1
13	Z1400119	TRACTOR HITCH	2
14	E0800079	TRACTOR HITCH PIN	4
15	8064385	PIN WITH SECURE SPRING PIN	2

Table 3

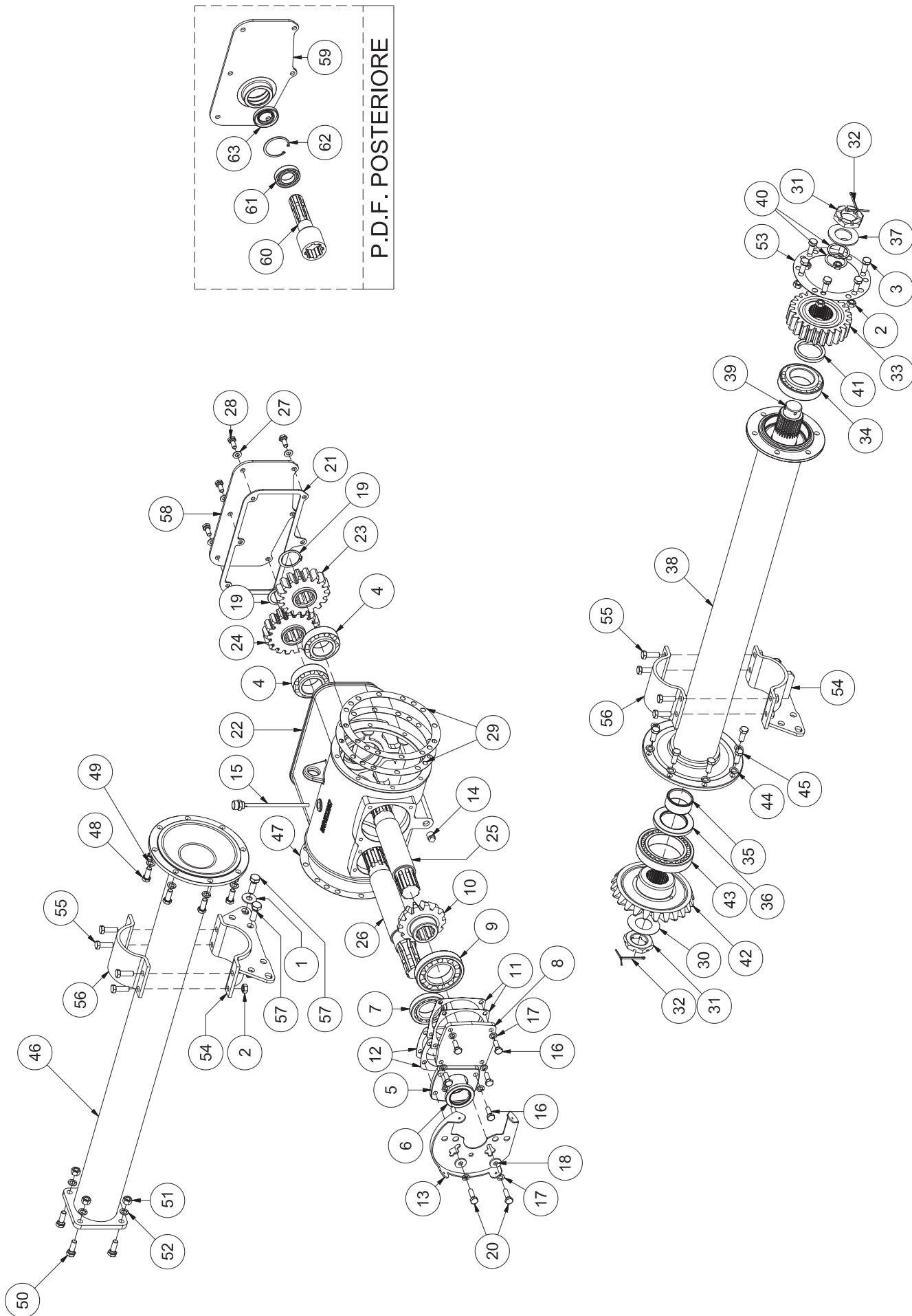


Table 3

POS.	CODE	DESCRIPTION	QTY
1	0056807	FLATWASHER Ø14	2
2	0030064	NUT M12	14
3	0015255	BOLT M12x30	6
4	0064274	BEARING 33210	2
5	3177492	CLUTCH COVER	1
6	0030166	OIL SEAL 50-72-10	1
7	0004539	BEARING 30210	1
8	0003186	PINION COVER	1
9	0003182	BEARING 30213	1
10	8200629	BEVEL GEAR PAIR	1
11		CLUTCH GASKET	1
	0003188	Thickness 0,2 mm	
	0103188	Thickness 0,5 mm	
12		PTO GASKET	1
	0014172	Thickness 0,2 mm	
	0114172	Thickness 0,5 mm	
13	0049307	PTO SHAFT GUARD HOLDER	1
14	0064227	PLUG	1
15	0064301	OIL LEVEL DIPSTICK L=175	1
16	0001008	BOLT M10x30	6
17	0001011	SPRING WASHER Ø10	8
18	8065035	FLATWASHER Ø10	2
19	0002110	SNAP RING Ø48 OUTER	2
20	0001009	BOLT M10x35	2
21	Z1200068	GEARBOX COVER GASKET	1
22	Z1200067	GEARBOX	1
23	0006181	Z17 GEAR	1
24	0006182	Z18 GEAR	1
25	Z1200074	PINION SHAFT	1
26	Z1200075	CLUTCH SHAFT	1
27	0002034	FLATWASHER Ø10	6
28	0033176	BOLT M10x25	6
29		GASKET	1
	0014143	Thickness 0,2 mm	
	0114143	Thickness 0,5 mm	
30	0014074	FLATWASHER Ø42	1
31	0066075	NUT M42	2
32	0066076	PIN Ø4x70	2
33	Z1400002	UPPER GEAR Z24	1
34	8066015	BEARING 32212	1
35	Z1400059	CONIC CROWN BUSH	1
36	0001630	OIL SEAL 65.100.10 BA	1
37	Z1400058	UPPER GEAR WASHER	1
38		DRIVE TUBE	1
	Z1420054	VERS.205	
	Z1423054	VERS.230	

POS.	CODE	DESCRIPTION	QTY
	Z1425054	VERS.250	
	Z1428054	VERS.280	
	Z1430054	VERS.300	
39		DRIVE SHAFT	1
	Z1420055	VERS.205	
	Z1423055	VERS.230	
	Z1425055	VERS.250	
	Z1428055	VERS.280	
	Z1430055	VERS.300	
40		REGISTER TICK	1
	Z1400062	Thickness 0,3 mm	
	Z1400063	Thickness 0,1 mm	
41	Z1400064	CONIC CROWN SPACER	1
42	8200629	BEVEL GEAR PAIR	1
43	8066342	BEARING 32018	1
44	0001067	SPRING WASHER Ø12	8
45	0002186	BOLT M12x30	8
46		SUPPORT TUBE	1
	Z1420066	VERS.205	
	Z1423066	VERS.230	
	Z1425066	VERS.250	
	Z1428066	VERS.280	
	Z1430066	VERS.300	
47	0114143	GASKET Thickness 0,5 mm	1
48	0002186	BOLT M12x30	8
49	0001067	SPRING WASHER Ø12	8
50	0007255	BOLT 12x35	4
51	0001042	NUT Ø12	4
52	0001077	SPRING WASHER Ø12	4
53	0014066	GASKET Thickness 0,5 mm	1
54	Z1200003	SUPPORT TUBE RING	2
55	0001043	BOLT M12x35	8
56	Z1200005	RING SUPPORT	2
57	0074232	BOLT M14x40 CL.8.8	4
58	Z1200071	GEARBOX COVER	1
		REAR SIDE PTO (GROUP)	
59	Z1200070	GEARBOX COVER	1
60	5500584	REAR PTO	1
61	0064841	BEARING 6007	1
62	0002294	SNAP RING Ø62	1
63	0002295	OIL SEAL 35-62-10	1

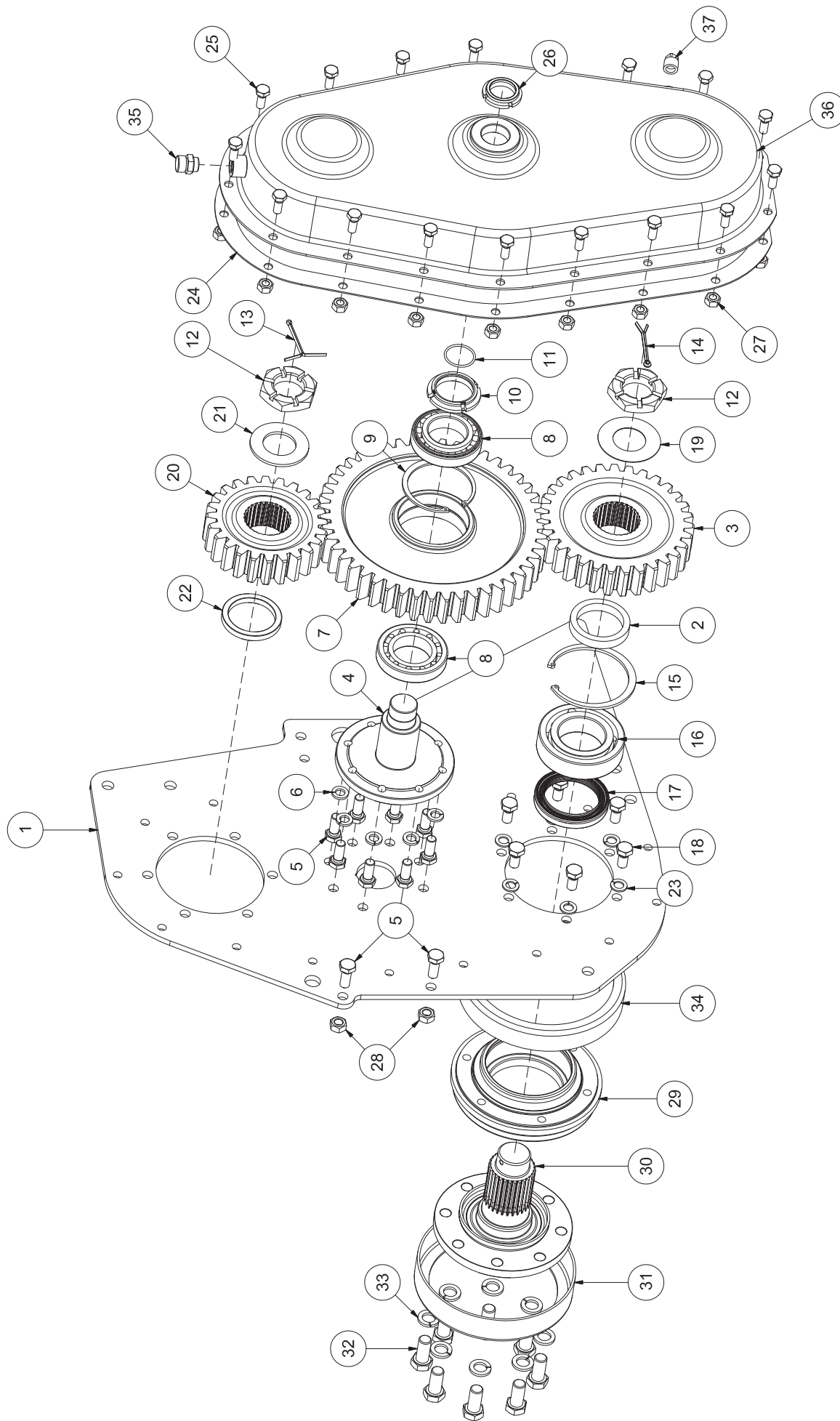


Table 4

Table 4

POS.	CODE	DESCRIPTION	QTY
1	Z1400005	SIDE PANEL LH	1
		GEARS	
	-----	CHAIN	
2	Z1400027	ROTOR SUPPORT LH PIN	1
3	Z1400004	LOWER GEAR Z31	1
4	Z1400025	CENTRAL PIN	1
5	0015255	BOLT M12x30	10
6	0061110	SPRING WASHER Ø12	8
7	Z1400003	CENTRAL GEAR Z 47	1
8	0004539	BEARING 30210	2
9	0008137	SNAP RING Ø90 INNER	1
10	0091121	SAFETY NUT GUK M50x1,5	1
11	0005577	O-RING UNI 3137	1
12	0066075	LOW NUT M42	2
13	0066076	PIN Ø4x70	1
14	0018461	PIN Ø5x50	1
15	0002073	SNAP RING Ø110 INNER	1
16	0018063	BEARING 22212	1
17	8064775	OIL-SEAL 70.95.14,5 RWDR	1
18	0001066	BOLT M12x25 CL.8.8	6
19	0014074	FLAT WASHER Ø42x80x1,5	1
20	Z1400002	UPPER GEAR Z24	1
21	Z1400058	UPPER GEAR WASHER	1
22	Z1400064	CONIC CROWN SPACER	1
23	0001077	SPRING WASHER Ø12	6
24	Z1400032	GASKET	1
25	0001241	BOLT M10x25	17
26	0037098	SAFETY NUT Ø35x1,5 GUK	1
27	0030156	NUT M10	17
28	0030064	NUT M12	2
29	0018062	LH ROTOR SUPPORT	1
30	Z1400139	LH ROTOR PIN	1
31	0018036	RH INNER COVER	1
32	0019048	BOLT M16x35	8
33	0002188	SPRING WASHER Ø16	8
34	0018057	LH OUTER COVER	1
35	8064435	OIL PLUG	1
36	Z1400039	CARTER	1
37	0064227	PLUG	1

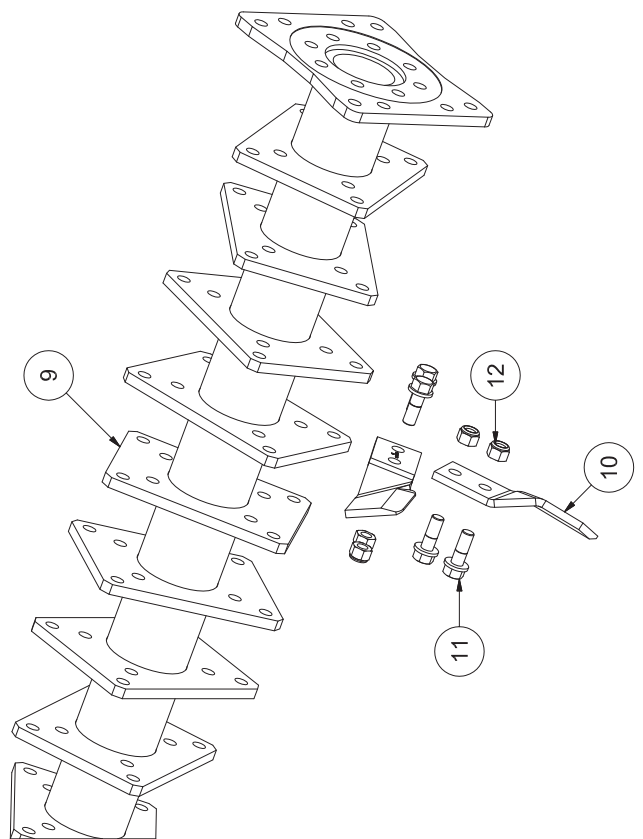
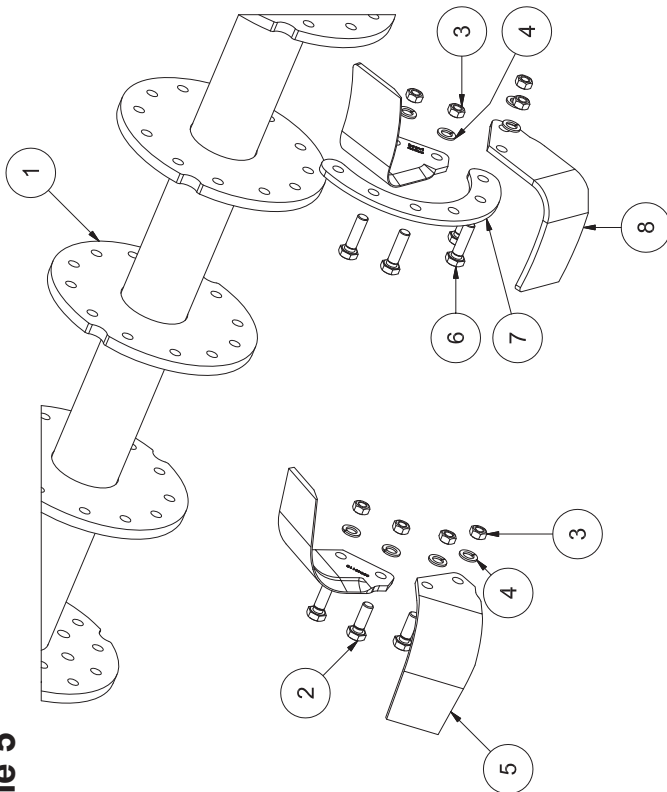
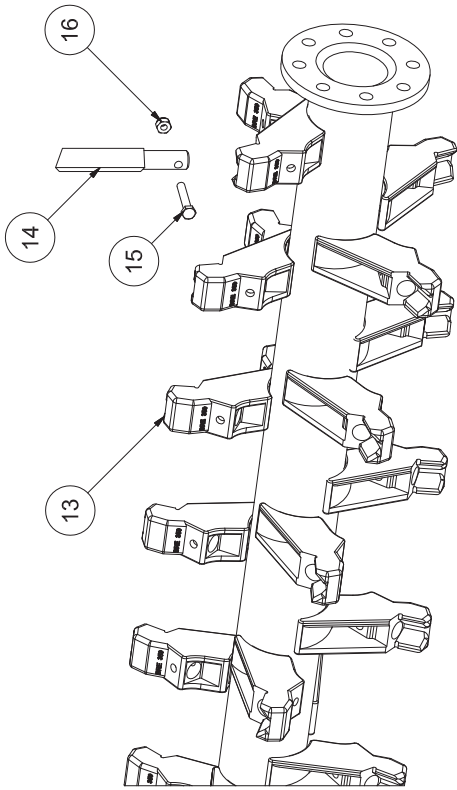


Table 5

Table 5

POS.	CODE	DESCRIPTION	QTY	POS.	CODE	DESCRIPTION	QTY
1		ROTOR	1	9		FLASH ROTOR	1
	Z1220027	VERS.205			Z1420209	VERS.205	
	Z1223027	VERS.230			Z1423209	VERS.230	
	Z1225027	VERS.250			Z1425209	VERS.250	
	Z1228027	VERS.280			Z1428209	VERS.280	
	Z1230027	VERS.300			Z1430209	VERS.300	
2	0003062	BOLT M14x40		10		FLASH BLADE	
		VERS.205	96		0020100D	RH	
		VERS.230	108			VERS.205	34
		VERS.250	120			VERS.230	38
		VERS.280	132			VERS.250	42
		VERS.300	144			VERS.280	46
3	0003064	NUT M14				VERS.300	50
		VERS.205	96		0020100S	LH	
		VERS.230	108			VERS.205	34
		VERS.250	120			VERS.230	38
		VERS.280	132			VERS.250	42
		VERS.300	144			VERS.280	46
4	0001020	SPRING WASHER Ø14				VERS.300	50
		VERS.205	96	11	0020102	BOLT M16x45	
		VERS.230	108			VERS.205	68
		VERS.250	120			VERS.230	76
		VERS.280	132			VERS.250	84
		VERS.300	144			VERS.280	92
5		"C" BLADE				VERS.300	100
	0064811D	RH		12	0020105	NUT M16	
		VERS.205	24			VERS.205	68
		VERS.230	27			VERS.230	76
		VERS.250	30			VERS.250	84
		VERS.280	33			VERS.280	92
		VERS.300	36			VERS.300	100
	0064811S	LH		13		SPIKES ROTOR	1
		VERS.205	24		5501089	VERS.205	
		VERS.230	27		0164161	VERS.230	
		VERS.250	30		0264161	VERS.250	
		VERS.280	33		5501168	VERS.280	
		VERS.300	36		0364161	VERS.300	
6	0017105	BOLT M14x50		14	0064131	BLADE SPIKES	
		VERS.205	96			VERS.205	-
		VERS.230	108			VERS.230	41
		VERS.250	120			VERS.250	46
		VERS.280	132			VERS.280	51
		VERS.300	144			VERS.300	56
7	0073670	FLANGE BRACING		15	0064168	BOLT M10x60	
		VERS.205	14			VERS.205	-
		VERS.230	16			VERS.230	41
		VERS.250	18			VERS.250	46
		VERS.280	20			VERS.280	51
		VERS.300	22			VERS.300	56
8		"L" BLADE		16	0014106	NUT M10	
	0064818S	LH				VERS.205	-
		VERS.205	24			VERS.230	41
		VERS.230	27			VERS.250	46
		VERS.250	30			VERS.280	51
		VERS.280	33			VERS.300	56
		VERS.300	36				
	0064818D	RH					
		VERS.205	24				
		VERS.230	27				
		VERS.250	30				
		VERS.280	33				
		VERS.300	36				

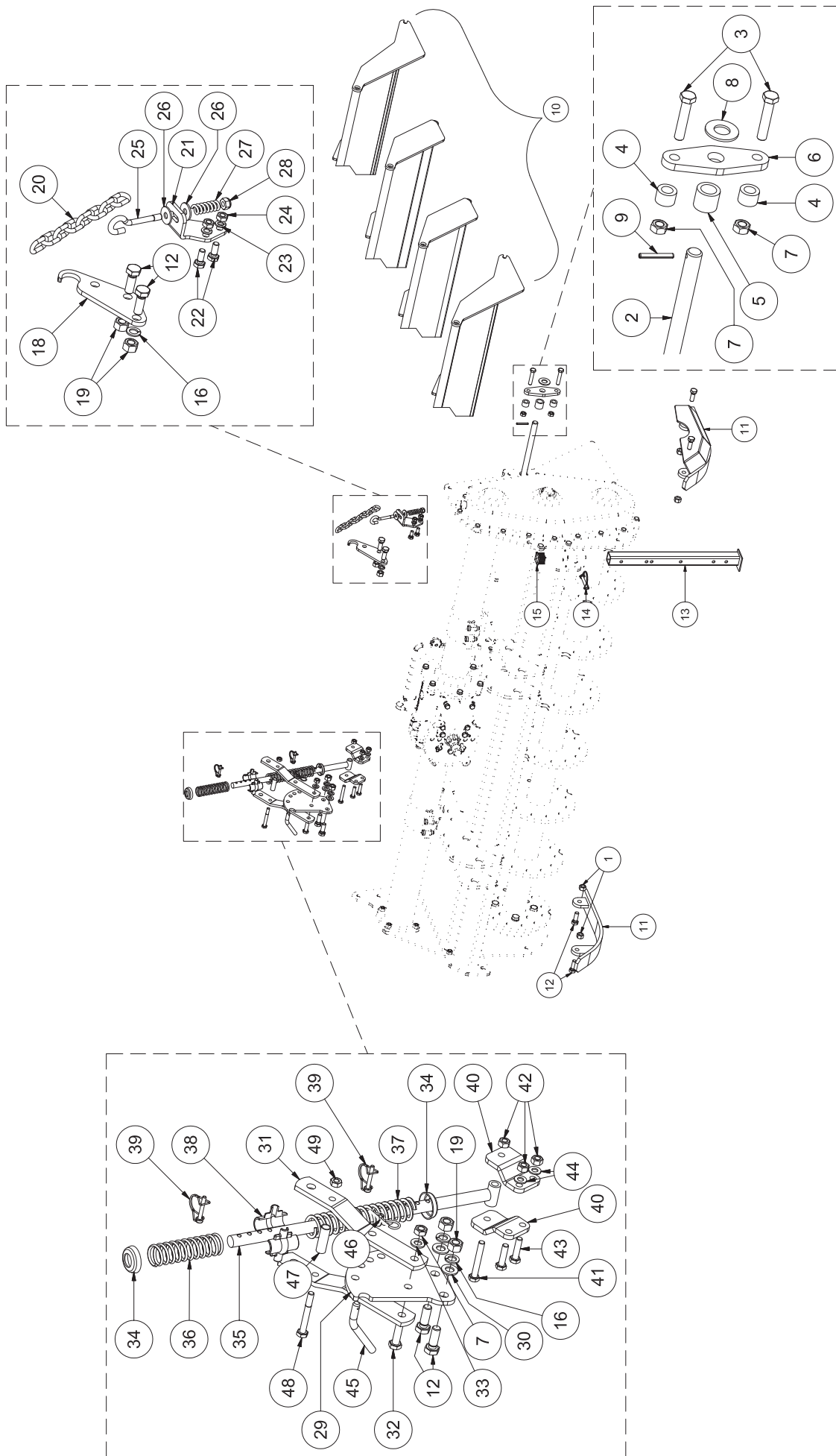


Table 6

Table 6

POS.	CODE	DESCRIPTION	QTY
1	0030358	NUT M14	4
2		HOOD PIN	1
	Z1420047	VERS.205	
	Z1423047	VERS.230	
	Z1425047	VERS.250	
	Z1428047	VERS.280	
	Z1430047	VERS.300	
3	0021257	BOLT M12x60	4
4	Z1400088	ROLLER SUPPORT SPACER	4
5	Z1400090	SPACER	2
6	Z1400089	ROLLER ARM GUIDE	2
7	0030064	NUT M12	7
8	0001172	FLAT WASHER Ø20	2
9	8064590	ELASTIC PIN Ø6x45	2
10		REAR HOOD	1
		SHORT HOOD	
	Z1420184	VERS.205	
	Z1423184	VERS.230	
	Z1425182	VERS.250 DX	
	Z1425183	VERS.250 SX	
	Z1428182	VERS.280 DX	
	Z1428183	VERS.280 SX	
	Z1430182	VERS.300 DX	
	Z1430183	VERS.300 SX	
		REINFORCED SHORT HOOD	
	Z1420147	VERS.205	
	Z1423147	VERS.230	
	Z1425112	VERS.250 DX	
	Z1425113	VERS.250 SX	
	Z1428112	VERS.280 DX	
	Z1428113	VERS.280 SX	
	Z1430112	VERS.300 DX	
	Z1430113	VERS.300 SX	
		LONG HOOD	
	Z1420179	VERS.205	
	Z1423179	VERS.230	
	Z1425180	VERS.250 DX	
	Z1425181	VERS.250 SX	
	Z1428180	VERS.280 DX	
	Z1428181	VERS.280 SX	
	Z1430180	VERS.300 DX	
	Z1430181	VERS.300 SX	
		REINFORCED LONG HOOD	
	Z1420028	VERS.205	
	Z1423028	VERS.230	
	Z1425079	VERS.250 DX	

POS.	CODE	DESCRIPTION	QTY
	Z1425080	VERS.250 SX	
	Z1428079	VERS.280 DX	
	Z1428080	VERS.280 SX	
	Z1430079	VERS.300 DX	
	Z1430080	VERS.300 SX	
11		SKIDS	
	Z1400122	LH	1
	Z1400127	RH	1
12	0074232	BOLT M14x40	8
13	5500445	STAND	1
14	0094730	COTTER PIN Ø10x70	1
15	0054814	PLUG	1
16	0001020	SPRING WASHER Ø14	6
18	3177303	CHAIN HOLDER	1
19	0001019	NUT M14	4
20	0007257	CHAIN Ø7mm GENOVESE	1
21		SUPPORT HOOD PLATE	
	Z1400187	LH	1
	Z1400186	RH	1
22	0033176	BOLT M10x25	2
23	0001280	SPRING WASHER Ø10	2
24	0090150	NUT M10	2
25	0021304	CHAIN HOOK	1
26	0030157	FLAT WASHER M10	2
27	0021315	SPRING	1
28	0014106	NUT M10	1
29	0017351	HOOD ADJUSTMENT PLATE	1
30	0091435	FLAT WASHER Ø14	2
31	Z1200052	ROD SUPPORT BLADE	2
32	0007716	BOLT M12x45	1
33	0002265	FLAT WASHER Ø12	1
34	0017365	COVER	2
35	Z1200051	SPRING HOLDER ROD	1
36	0094339	SPRING	1
37	0017369	LONG SPRING	1
38	0015244	ROD GUIDE	2
39	0006610	COTTER PIN Ø6x46	2
40	Z1400085	CHAIN SUPPORT	2
41	0215207	BOLT M10x70	1
42	0030156	NUT M10	3
43	0038614	BOLT M10x40	2
44	0002034	FLAT WASHER Ø10	2
45	0017357	PIN	1
46	0015240	COTTER PIN Ø3	1
47	Z1200048	HOOD SPRING BUSH	1
48	0015236	BOLT M10x80	1
49	8065109	NUT M10	1

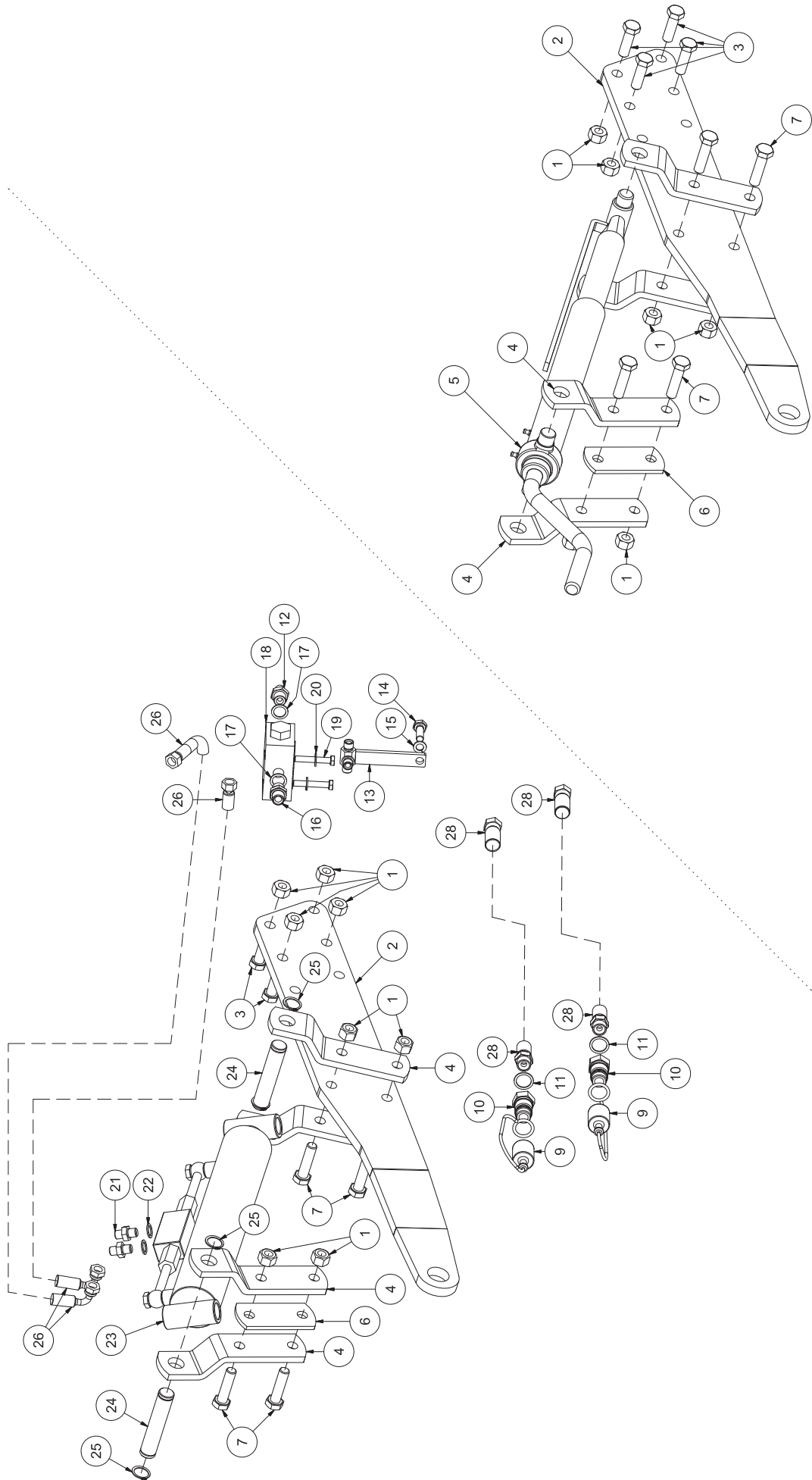


Table 7

Table 7

POS.	CODE	DESCRIPTION	QTY
1	0030358	NUT M14	16
2		ROLLER ARM	
	Z1400033	RH	1
	Z1400034	LH	1
3	0037349	BOLT M14x45	8
4	0060356	ADJUSTMENT BOLT SUPPORT	8
5	8200047	ADJUSTMENT BOLT	1
6	Z1400098	ADJUSTMENT BOLT SUPPORT PLATE	2
7	0032682	BOLT M14x55	8
9	9000020	RUBBER PLUG	2
10	0041871	QUICK CONNECTOR 1/2" MALE	2
11	0036532	COPPER WASHER 1/2"	2
12	0026719	NIPPLE 3/8" TO 1/4"	2
13	5500537	HYDRAULIC TUBE JOINT	1
14	8065091	BOLT M10x30	1
15	0001011	SPRING WASHER Ø10	1
16	0041867	NIPPLE 3/8"	1
17	0041866	COPPER WASHER 3/8"	3
18	E1100139	VALVE	1
19	0015193	BOLT M8x50	2
20	0015230	FLAT WASHER Ø8	2
21	0052427	NIPPLE 1/4"	2
22	0052438	COPPER WASHER 1/4"	2
23	E1100303	ROLLER ADJUSTMENT CYLINDER	1
24	3177557	ROLLER CYLINDER PIN	2
25	8064512	SNAP RING OUTER Ø22	4
26	3177587	HYDRAULIC TUBE 1/4" L=2500mm.	2
28	3177350	HYDRAULIC TUBE 3/8" L=2000mm.	2

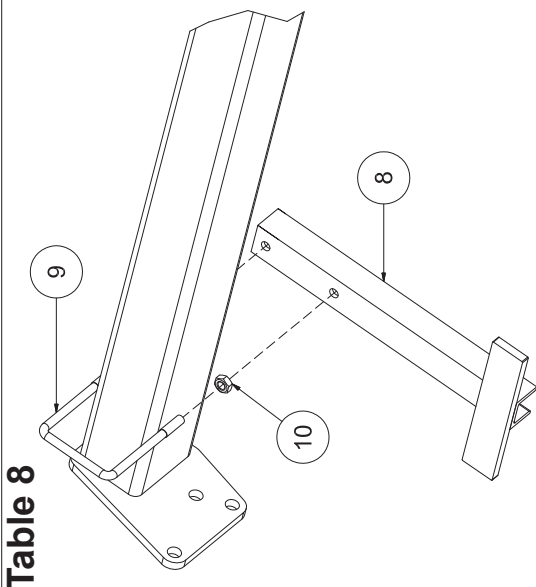
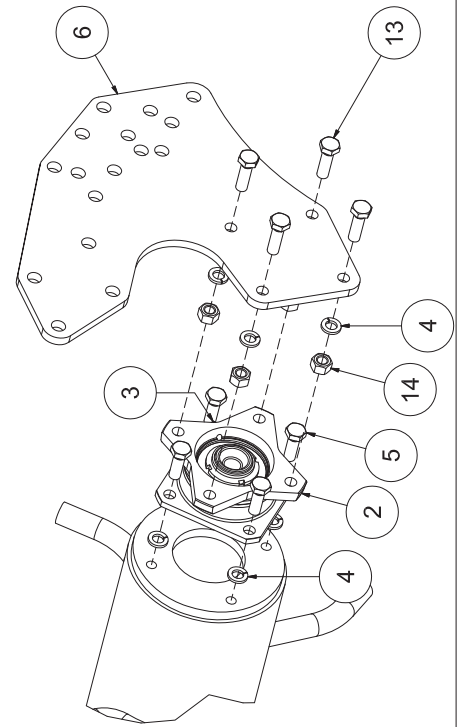
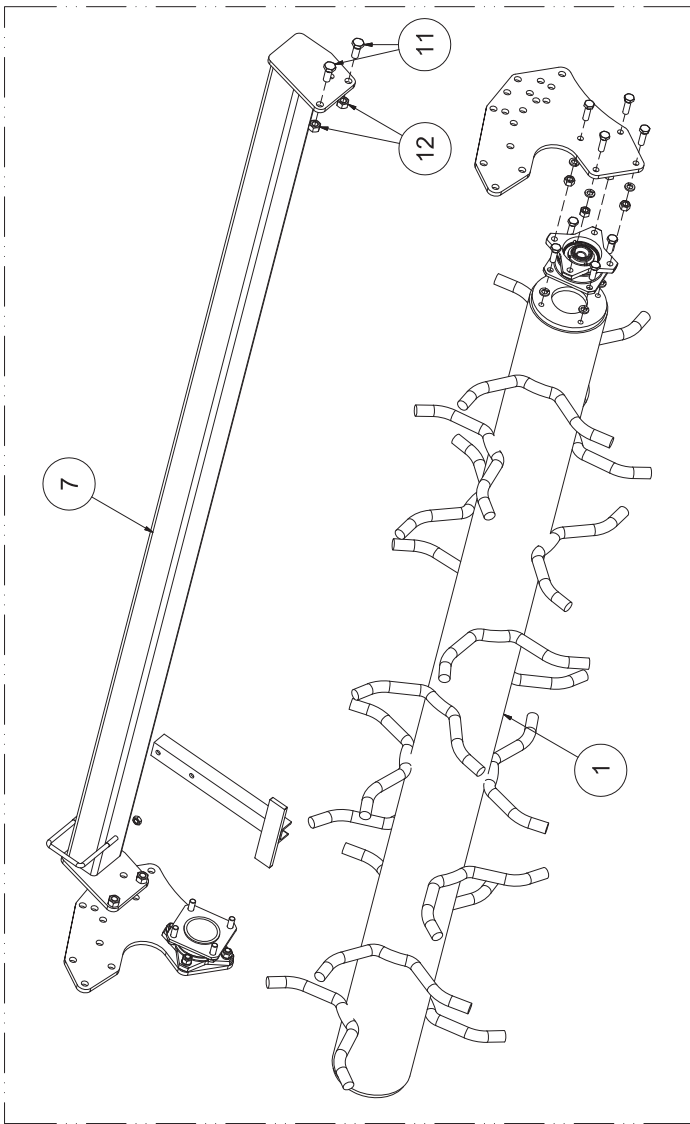


Table 8

Table 8

POS.	CODE	DESCRIPTION	QTY
1		SPIKED ROLLER Ø477	1
	5500097	VERS. 205	
	5500098	VERS. 230	
	5500099	VERS. 250	
	R0628022	VERS. 280	
	5500341	VERS. 300	
		SPIKED ROLLER Ø525	1
	5500088	VERS. 205	
	5500089	VERS. 230	
	5500090	VERS. 250	
	R0728008	VERS. 280	
	5500091	VERS. 300	
2	8200063	ROLLER SUPPORT KIT	2
3	0001065	GREASE FITTING M10x1	2
4	0001077	SPRING WASHER Ø12	16
5	0032942	BOLT M12x25	8
6	R0100002	ROLLER SUPPORT PLATE	2
7		SCRAPERS HOLDER BAR	1
	R0220002	VERS. 205	
	R0223002	VERS. 230	
	R0225002	VERS. 250	
	R0628026	VERS. 280	
	R0230002	VERS. 300	
8		ROLLER SCRAPER	
		VERS. 205	7
		VERS. 230	8
		VERS. 250	9
		VERS. 280	10
		VERS. 300	11
9		"U" BOLT Ø10mm	
		VERS. 205	7
		VERS. 230	8
		VERS. 250	9
		VERS. 280	10
		VERS. 300	11
10		NUT M10	
		VERS. 205	14
		VERS. 230	16
		VERS. 250	18
		VERS. 280	20
		VERS. 300	22

POS.	CODE	DESCRIPTION	QTY
11	0001526	BOLT M14x35	4
12	0030358	NUT M14 SELF LOCKING	4
13	0027236	BOLT M12x40	8
14	0003038	NUT M12	8
		COMPLETE SPIKED ROLLER KIT	
	8200125	VERS. 205 Ø477	
	8200124	VERS. 230 Ø477	
	8200123	VERS. 250 Ø477	
	R0628024	VERS. 280 Ø477	
	8200181	VERS. 300 Ø477	
	8200117	VERS. 205 Ø525	
	8200118	VERS. 230 Ø525	
	8200119	VERS. 250 Ø525	
	R0728009	VERS. 280 Ø525	
	8200120	VERS. 300 Ø525	

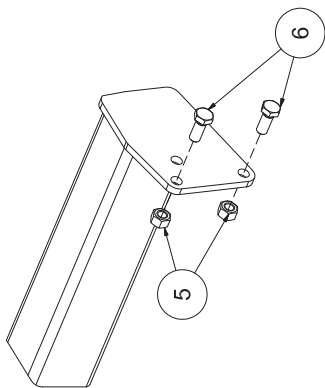
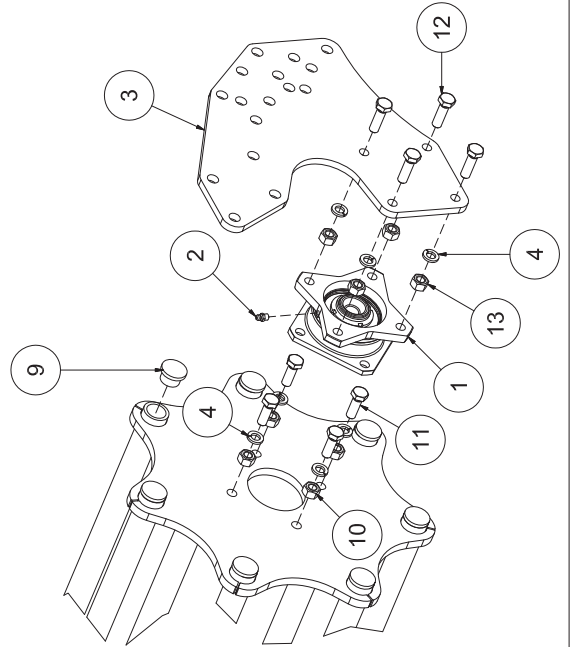
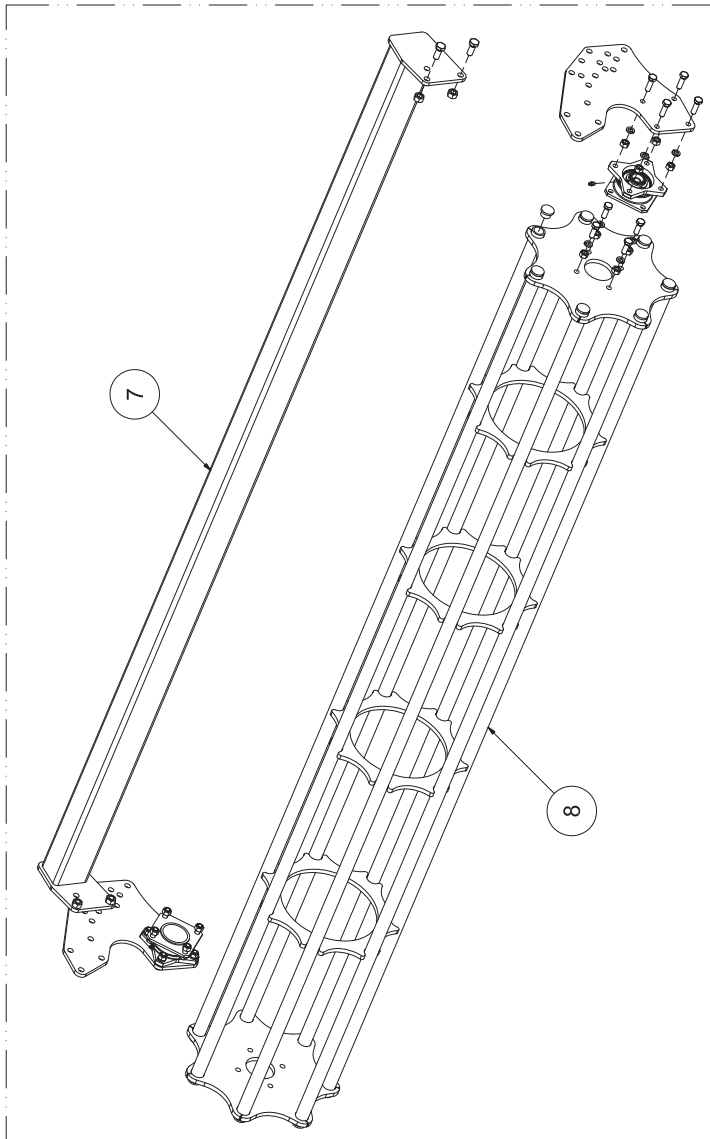


Table 9

Table 9

POS.	CODE	DESCRIPTION	QTY
1	8200063	ROLLER SUPPORT KIT	2
2	0001065	GREASE FITTING M10x1	2
3	R0100002	ROLLER SUPPORT PLATE	2
4	0001077	SPRING WASHER Ø12	16
5	0030358	NUT M14 SELF LOCKING	4
6	0001526	BOLT M14x35	4
7		SCRAPERS HOLDER BAR	1
	R0220002	VERS. 205	
	R0223002	VERS. 230	
	R0225002	VERS. 250	
	R0628026	VERS. 280	
	R0230002	VERS. 300	
8		CAGE ROLLER Ø405	1
	5500650	VERS. 205	
	5500651	VERS. 230	
	5500652	VERS. 250	
	R1028010	VERS. 280	
	5500653	VERS. 300	
9	3178211	CAP Ø22	14
10	0003038	NUT M12	8
11	0007255	BOLT M12x35	8
12	0027236	BOLT M12x40	8
13	0003038	NUT M12	8
		COMPLETE CAGE ROLLER KIT	
	8200351	VERS. 205 Ø405	
	8200352	VERS. 230 Ø405	
	8200353	VERS. 250 Ø405	
	R1028013	VERS. 280 Ø405	
	8200354	VERS. 300 Ø405	
	8200247	VERS. 205 Ø450	
	8200255	VERS. 230 Ø450	
	8200093	VERS. 250 Ø450	
	R1128010	VERS. 280 Ø450	
	8200092	VERS. 300 Ø450	

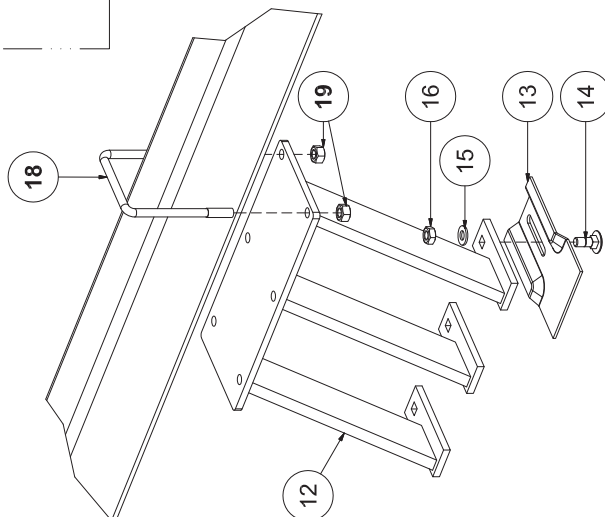
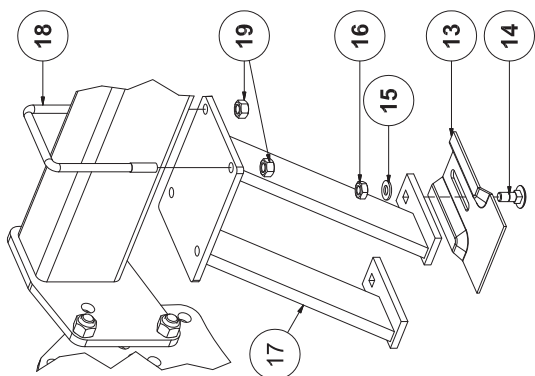
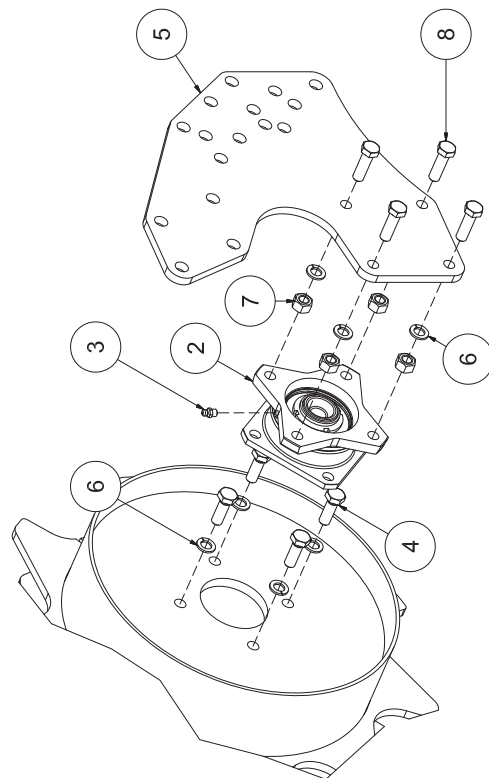
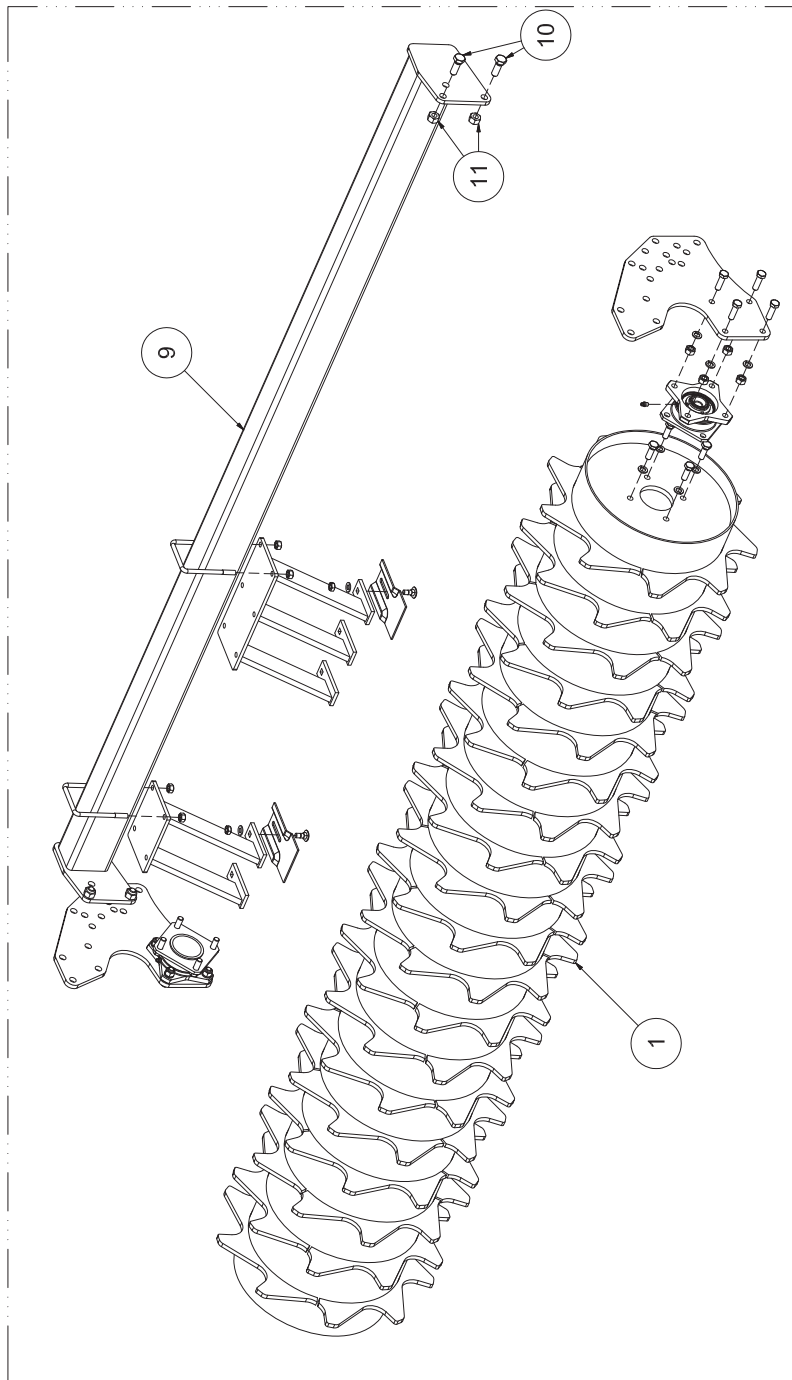


Table 10

Table 10

POS.	CODE	DESCRIPTION	QTY	POS.	CODE	DESCRIPTION	QTY
1		PACKER ROLLER Ø406	1	16	0090150	NUT M10	
	5500043	VERS. 205				VERS. 205 Ø406	17
	5500044	VERS. 230				VERS. 205 Ø464	16
	5500045	VERS. 250				VERS. 230 Ø406	19
	R0128031	VERS. 280				VERS. 250 Ø406	20
	501801	VERS. 300				VERS. 280 Ø406	22
		PACKER ROLLER Ø464	1			VERS. 300 Ø406	24
	5500011	VERS. 205		17	R0100007	DOUBLE SCRAPER HOLDER	
	5500012	VERS. 230				VERS. 205 Ø406	1
	5500013	VERS. 250				VERS. 230 Ø406	2
	R0228025	VERS. 280				VERS. 250 Ø406	1
	5500015	VERS. 300				VERS. 280 Ø406	2
2	8200063	ROLLER SUPPORT KIT	2			VERS. 300 Ø406	-
3	8064820	GREASER M8x1	2			VERS. 205 Ø464	2
4	0007255	BOLT M12x35	8			VERS. 230 Ø464	-
5	R0100002	ROLLER SUPPORT PLATE	2			VERS. 250 Ø464	1
6	0061110	SPRING WASHER Ø12	16			VERS. 280 Ø464	2
7	0003038	NUT M12	8			VERS. 300 Ø464	-
8	0015255	BOLT M12x30	8	18	R0200004	"U"-BOLT	
9		SCRAPER HOLDER BAR	1			VERS. 205 Ø406	17
	R0220002	VERS. 205				VERS. 205 Ø464	16
	R0223002	VERS. 230				VERS. 230 Ø406	19
	R0225002	VERS. 250				VERS. 230 Ø464	18
	R0628026	VERS. 280				VERS. 250	20
	R0230002	VERS. 300				VERS. 280	22
10	0001526	BOLT M14x35	4			VERS. 300	24
11	0030358	NUT M14	4	19	0090182	NUT M10	
12	R0100008	TRIPLE SCRAPER HOLDER				VERS. 205 Ø406	34
		VERS. 205 Ø406	5			VERS. 205 Ø464	32
		VERS. 230 Ø406	5			VERS. 230 Ø406	36
		VERS. 250 Ø406	6			VERS. 230 Ø464	38
		VERS. 280 Ø406	6			VERS. 250	40
		VERS. 300 Ø406	8			VERS. 280	44
		VERS. 205 Ø464	4			VERS. 300	48
		VERS. 230 Ø464	6				
		VERS. 250 Ø464	6				
		VERS. 280 Ø464	6				
		VERS. 300 Ø464	8				
13	3178974	SCRAPER					
		VERS. 205 Ø406	17				
		VERS. 205 Ø464	16				
		VERS. 230 Ø406	19				
		VERS. 250 Ø406	20				
		VERS. 280 Ø406	22				
		VERS. 300 Ø406	24				
14	0060509	VITE TTDE M10x25 CL.4.6					
		VERS. 205 Ø406	17				
		VERS. 205 Ø464	16				
		VERS. 230 Ø406	19				
		VERS. 250 Ø406	20				
		VERS. 280 Ø406	22				
		VERS. 300 Ø406	24				
15	0002034	RONDELLA PIANA Ø10					
		VERS. 205 Ø406	17				
		VERS. 205 Ø464	16				
		VERS. 230 Ø406	19				
		VERS. 250 Ø406	20				
		VERS. 280 Ø406	22				
		VERS. 300 Ø406	24				

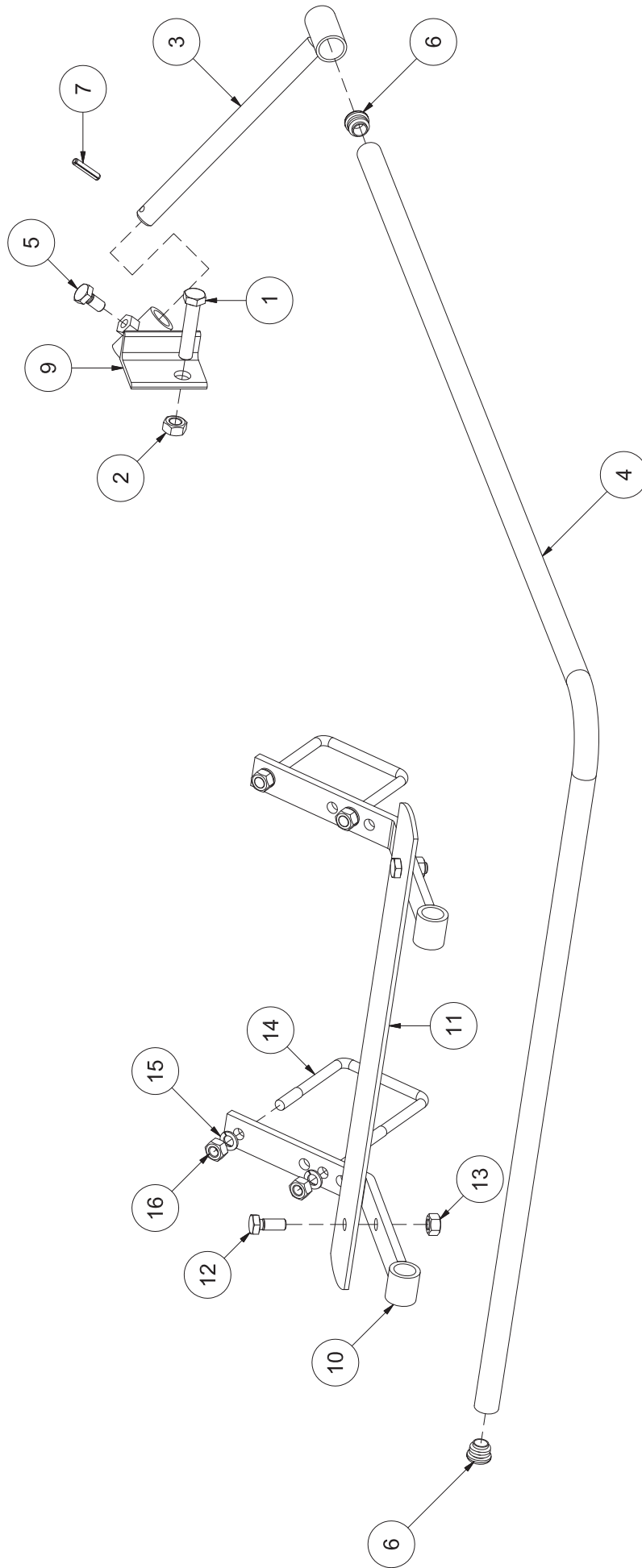


Table 11

Table 11

POS.	CODE	DESCRIPTION	QTY
1	0021257	BOLT M12x60	2
2	0030064	NUT M12	2
3	0037482	SUPPORT	2
4	0064319	CE PROTECTION	2
5	0006349	BOLT M10x20	2
6	3178211	PLUG	4
7	0015057	ELASTIC PIN Ø6x30	2
9		PROTECTION HITCH	
	0164335	RH	1
	0264335	LH	1
10	0064336	PROTECTION'S SUPPORT	4
11	0035493	PROTECTION'S PLATE	2
12	0033176	BOLT M10x25	4
13	0030156	NUT M10	4
14	0077450	"U"-BOLT M10	4
15	0001280	SPRING WASHER Ø10	8
16	0001279	NUT M10	8



Via Labriola, 2 - 37054 NOGARA (Verona) - ITALY
Tel. +39 0442 537402 - Fax 0442 537 444
www.breviglieri.com - export@breviglieri.com